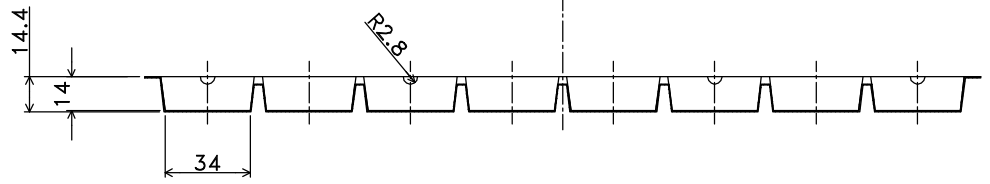
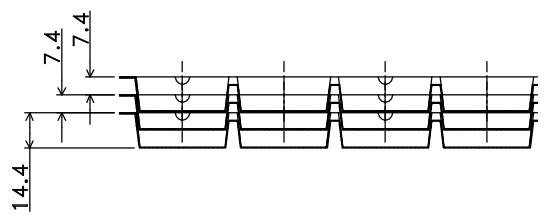
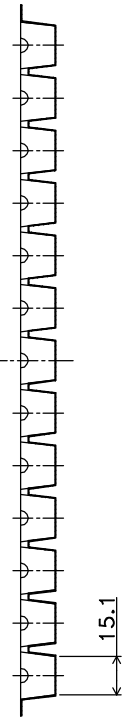
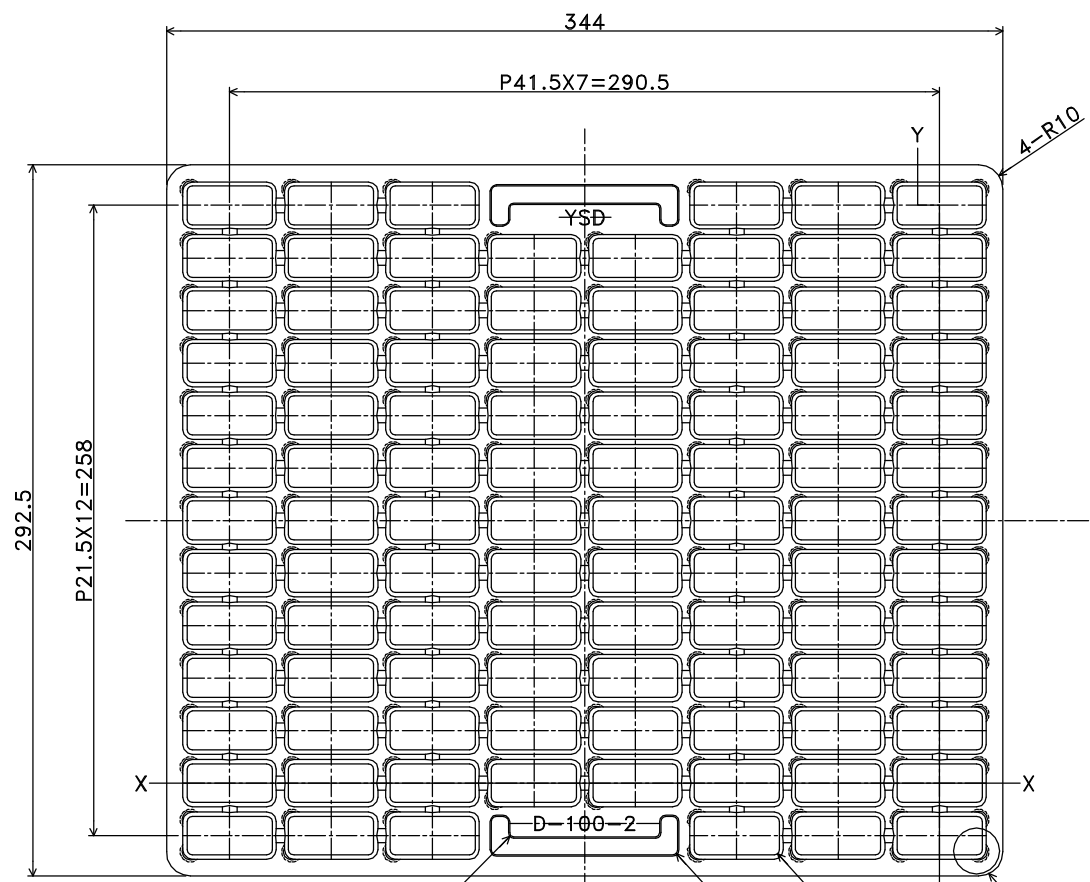


NOTES

1. GENERAL TOLERANCE,  $\pm 0.5$
2. MATERIAL, PS 0.40t (COLOR, NATURAL) ANTI-STATIC
3. DRAFT ANGLE, 7°00' MAX, TYP.
4. INDICATE THE P/N (6m/m CHARACTER SIZE)



SECTION "X-X"

UNDER STACKS  
DEPTH 7

DEVN	04 MAR 2005	MATERIAL	HEAT TREAT
CHK	04 MAR 2005	YOSHIDA PACKAGE CO.,LTD KAWASAKI, JAPAN	
APV	04 MAR 2005		
M, MOTODA		Jr. YOSHIDA	
Jr. YOSHIDA		Jr. YOSHIDA	
TRAY FOR 100 POCKET (Product Drawing)			
SCALE	SIZE	DRAWING NO	SHEET
	A3	D-100-2	1 OF 1
			REV
			O

LDC  
DIST